

Exploring Immortality: Structured Dark Energy *plus* Vibration *equals* Creative Life Force – The Foundation of All Life

by [Alan Middleton](#) – 16 November 2022

‘Paranormal events like spoon-bending...and communication with the dead are resented because, if confirmed, the WHOLE FABRIC OF SCIENCE WOULD BE THREATENED.’ – Adrian Berry, *Daily Telegraph* Science Correspondent (5 Nov 1990).

Introduction

I wrote the original of this article on 8 December 2021 and it was published on the Spiritual Science Founders Association (SSFA) website. Robin Foy and others set up the SSFA to continue the work of the Scole Experimental Group (SEG) after The Scole Experiment ceased. I was the Science Officer for SSFA until it closed in February 2022. I now work in association with a group formed in October 2022: the Scole Experiment Afterlife Research Association (SEARA). This organisation includes the members of the (Ron) Pearson Research Team (PRT) which, like The Scole Experiment team, made major advances in understanding the processes which support life and environments on many frequencies. This revision of the earlier article has been updated to provide additional information to SEARA members. I live in Norwich, England. I am a retired engineering company director and a member of PRT since 2008. I have forty-two years of paranormal research behind me. I currently have 398 Scole Experiment séance and seminar tapes in my care, which I am studying as I convert them to .wav files before sending them, together with selected Notes, so that excerpts can be put on [The Scole Experiment](#) website. Knowing the history and content of the Scole tapes, and some of the people involved in their recording, I have absolutely no reservations in concluding that we all survive beyond our Earth lives irrespective of creed or culture. Grant & Jane Solomon, who wrote [The Scole Experiment: Scientific Evidence for Life After Death](#) (1999) and maintain the Scole website, believe that this communication is genuine. I wrote two articles relating to Ron Pearson’s ‘Big Breed Theory’, which were published in June and July 2017 by UK magazine *Psychic News* under the title, ‘The Theory of Everything’. The issue numbers are 4152 and 4153. However, much progress has been made since then. Please kindly consider what I have written below. It is a small fraction of what we know at present, and we are learning every day. **I gratefully acknowledge the assistance of my fellow researcher and channelling medium, Brigitte Rix, in the preparation of this article. We are both now working in association with SEARA.**

Ron Pearson and the Quest for a NEW Theory of Everything

Ronald D Pearson (1925-2016) was a highly qualified jet engine troubleshooting engineer who became a Lecturer in Thermodynamics and Fluid Mechanics at Bath University. In 1987 he retired and took an interest in the physics of cosmology. Ron found problems with the ‘Big Bang Theory’, the biggest of which was a mistake in the age of the universe which - if the correct maths had been used - would have taken its age back to an unacceptable 833 billion years. More about Ron Pearson can be found on the websites [Pearsonian Space](#) and [The Campaign for Philosophical Freedom](#).

There are major problems with the Big Bang Theory. Ron Pearson found these and set out to solve them.

Ron Pearson's theory is a major first step towards understanding why we exist, **but is based on the mistaken belief that our universe came from a void...whereas, in fact, the Void cannot exist!** We shall look here at the useful basic principles of the Pearson Theory.

What follows is simplified for the lay reader to be able to understand the complex problems which Ron faced. I will try to describe to you how he arrived to a major discovery which can change the way we all think about our existence.

Ron Pearson's Big Breed Theory

When Ron Pearson assessed the Big Bang Theory, the assumption was that our universe was the only one which existed. Whilst some now believe this is not correct, this was his starting point.

Ron looked at the Creation Problem and started again from a void of **ZERO ENERGY**: a vast, empty, limitless space.

A quantum is the smallest discrete unit of a phenomenon: a single small 'package'. In 1904, Max Planck first used it to describe why very little ultraviolet light is produced by furnaces, compared to white light. It turns out that it takes a hundred times more energy to make UV than white light. In order to make his maths work, he had to make the light arrive in small packages – 'quanta'. A year later, in his first Relativity Theory, Einstein called the light package a 'photon'. This was the start of the concept of wave-particle duality. Einstein also made the mistake of replacing the background medium, the Aether, with curved space time.

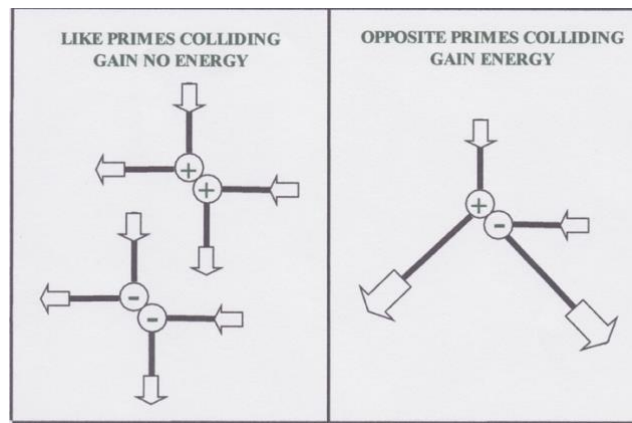
In 1955, John Wheeler proposed that the Void broke down into two equal and opposite types of energy which flew apart, slowed down, stopped, and then accelerated back towards each other to collide and annihilate each other. This was supposed to happen everywhere in the Void. This was labelled the 'quantum foam' as they appeared and disappeared like bubbles in a beer glass.

Ron looked at this and saw that the fundamental principle of **momentum** had been overlooked. He reasoned that both of these energy packets – which he called 'primaries' – would need to be opposite to each other in all respects; and therefore negative primaries would have negative momentum.

He also said that these primaries did not reverse direction but continued on into the Void. The only thing that was required was for them to have sufficient **existence** for chance to provide a situation where there were sufficient numbers to start to colliding with each other.

*I propose an extension to this idea, based on 2012 information channelled by the medium, Brigitte Rix, which says the fundamental background has always existed. This implies that the primaries would always accumulate. Therefore, they do not degrade, they continue to exist and increase in numbers so there will always be sufficient numbers to start the collision process. **Hence the Void cannot exist.***

The primaries are always produced in equal and opposite pairs as a cluster of four. This is to exactly balance creation in all directions. So, however many there are, there will always be an exact number of each positive and negative type.



Collision energy breeding of Ron Pearson's 'primaries'

The sum total of energy is always ZERO.

Then, like a blind man playing billiards with an exactly equal number of red and white balls on the table, whichever ball he strikes, he has a 50% chance of that ball hitting the same coloured ball, and a 50% chance of it hitting an opposite coloured ball.

This means that 50% of all collisions, on average, will be with opposite types of primaries.

50% will be like-on-like collisions. The like-on-like collisions result in the primaries behaving like billiard balls and bouncing off each other. Their velocities stay the same.

However, with the collision of opposite types, the negative momentum fights against the positive momentum and draws more energy from the 'Void'. This results in each primary being accelerated. They both have energy gains in all except direct inline collisions, where they pass through each other without loss or gain of velocity.

As the primaries pass from collision to collision, the increase to their velocity adds to their mass, until a critical mass is reached, and at the next collision the primary is split into two.

These then go on to breed more energy and more particles. These primaries, which Ron thought could be moving at near light speed, then go on to collide with other primaries.

The result is a chain reaction which breeds energy in the form of a ball-like explosion of accelerating and splitting primaries.

Because there are always an exact number of positive and negative primaries the sum total of energy in the whole is always ZERO.

To see a simulation of the Opposed Energy Dynamics, go to this YouTube link:
<https://youtu.be/ZneJSaEjCRk>

The Formation of the Filaments

As the ball of breeding primaries grows in size, like an explosion, it has a pressure wave on its outside. This pressure wave causes the primaries in the centre of the ball to squash together and have less room to move and breed. As this happens, they **start to merge into each other**.

Small differences in the density and numbers result in the formation of 'filaments' of annihilating

energy. They are formed by what is called 'Chaos Theory'. This is where small differences have large effects at a later stage.

Ron, who was trying to make a system which worked with junctions like a transistor circuit, started with what he called his 'Matchstick Aether'.

By 2007 in his book [*Creation Solved?*](#) this had changed to a continuous three-dimensional network.

This network is like a neural network. These are known to self-organize when continuously fed with energy, as Ron explained.

I became aware of Ron's work as the basis of his theory is published in the book, *They Walk Amongst Us*, by Emma Heathcoat James.

In 2008, I contacted Ron by email and assisted with his research. Up to this time, Ron's filament formation was a smooth process. However, I was looking for a power source.

In 2008, I sent an email to Ron which said, 'I don't think this filament formation is a smooth process. I think the filaments are growing and then suddenly collapsing'.

A few minutes later, I had a reply from Ron which said, '**Ah – The system is surging**'.

So, between us, we had found the power source for all that appears to exist. The primaries surrounding the filaments surge and smack waves of vibration into the filaments in all parts of the network. The surging then stops and the filaments absorb the primaries for annihilation in exactly equal and opposite numbers.

These filaments, made by annihilating energy, are totally solid, yet are not like what we call 'physical' when we experience 'solid', because they have no mass. This is because they are in the process of annihilating mixed energy out of existence. As the filaments absorb primaries, more space is made surrounding the filaments and another surge pulse occurs.

Because the filaments have no mass, they have no resistance to the passage of vibration through them over vast distances at near infinite speed.

I then went on to think about how that vibration could be made to evolve. There had to be a control mechanism.

Ron had been looking for 'Junctions'. Because of my own interest in computers, I knew about 'Optical computers'. These can perform all the functions of an electronic computer but they use light and direct it by pulse beam switching. This is like directing a flow of water down one channel or another, by hitting it with a fire hose from one side or the other.

*But, with the filament network, we are looking for a system that runs on **compression waves** – which is also what sound waves are. So how would such a system be able to evolve and then control those sound waves?*

The answer which came to me was that there was 'FEEDBACK'. Some natural frequencies or harmonics, running inside the filaments, would accelerate the timing of the surge pulse. Others would reduce the timing rate.

By this means, large patterns of semi-stable natural vibrations would send out vibrations to other

patterns, which would change their vibration patterns and return a varied frequency. They would also be able to use harmonic coupling.

With limitless time, the system could then evolve intricate information exchange in many places, and on a vast scale, by advantageous mutation and subsequent intentional design.

Ron Pearson had predicted the existence of the Background Intelligence. He called the filament network, '**The Intelligent Aether**'; shortened to **I-ther**. Regrettably, in his next book, he went back to his matchstick I-ther.

I emailed him and pointed out that the matchstick I-ther, like a random pile of matchsticks (some of which were joined end to side), would not carry a signal, as it was too disconnected and had too many reflecting ends. The correct version was his 'Net' I-ther.



I-ther structure from Ron Pearson's book, *Creation Solved* (2007)

Ron agreed with this but it was never corrected in his later publications.

We now know that the only reality is Ron's filament network of Dark Energy and the highly organised vibrations which run through its filaments. It is 100% of everything which appears to live, exist and create, on many frequencies of life.

So, why should I believe this?

In Robert A. Monroe's 1985 book, [*Far Journeys*](#) (remote viewing), Chapter 5, the Monitor says: 'Ask how we got here in the first place, how we got on the planet Earth and in space time.'

The Remote Viewer says: '**I felt like I was being taken back in time and could feel the bombardment of particles...of matter...and actually seeing the bombardment of particles. Some particles that fuse together actually became a working mechanism. I guess the only thing that we can understand and relate it to would be like a computer.**'

This is a perfect description of Ron Pearson's 'Opposed Energy Dynamics' and **the resulting Dark Energy Matrix which evolved vast sound-powered, multi-frequency, intelligent, computer systems.**

In Jane Roberts' 1970 book, [*The Seth Material*](#) (deep trance mediumship) – Chapter 3: 'Seth Comes to a Séance', Seth says:

'Nevertheless the walls [of Jane's room] are transparent. So are the wires but, for practical

purposes, we must behave as if both are there...Again, if you will consider our maze of wires, I will ask you to imagine them filling up everything that is. Consider that these wires are mobile, constantly trembling, and alive – in that they not only carry the stuff of the universe but are themselves projections of it – and you will see how difficult this is to explain. Nor can I blame you for growing tired when, after asking you to imagine this strange structure, I then insist that you tear it apart, for it is no more to be actually seen or touched than is the buzzing of a million invisible bees.'

What Seth is trying to describe is *the filament structure of Dark Energy and the highly organised vibrations that it carries on many frequencies.*

On the Earth frequency set, the computer system makes 'steps' like a film/movie has frames. When played on to our synchronised core software, Our Creative Thinking Tool, those frames **give the impression of 'time'**. Once the system has constructed them like a computer programme, it then switches to the 'Display Mode', and patterns of vibrations are organised to **create the illusion of 'solid' structures when in fact they are hollow. The internal structures are available for display as new surfaces are exposed.**

This is the same way that modern computer graphics are made to produce a surface illusion mapped onto a co-ordinate 3D grid called a wire frame. These are becoming increasingly more realistic after only eighty years of development.

However the Creative Thinking Power at the base level of the system has always existed. So the displays that we inhabit have long been perfected.

This is like a highly detailed 3D cartoon. This is the real reason for 'wave-particle duality'. Our Creative Thinking Power is tuned to this cartoon via the brain illusion software, which links it to our five senses and deceives us into believing it to be real. Seth calls it '**camouflage**', and describes our lives as '**fiction**'. High level channelling, via the medium Brigitte Rix, describes Earth life as '**a Play**' and as '**Theatre**'.

A Scole tape, from the experimental session on 20 September 1994, provides the following information – from the Scole group's spirit guide Manu, speaking through Diana, one of the two entranced Scole group mediums:

'We have a creative force within each one but you know mankind manifests through many masks. When you are sending loving thoughts in your healing, forget the mask. Forget the manifestation of the man or the woman but look within the person. It is that spark if you like, that you must unite with. It is that which will cause it to go into a higher vibration by your love. It is that which is going to bring about the true healing.'

A Scole tape, from 21 February 1994, provides this information – the communicator is Patrick McKenna, who completed his last Earth life in 1942, and became the Spiritual Coordinator for the spirit team at Scole during 1994:

'The brain is a means of communicating with the mind. When you die, you just let go of your brain.' **However, I believe the 'mind', perhaps better described as 'Creative Thinking Core Software' is not resident in the brain. It is located in the centre of the chest at the level of the heart. It operates on higher frequency sets than the body illusion. For this reason, it is not normally detectable.**

This core Creative Thinking Software is in communication with other minds – which are also

playing the Earth Game – and the ethereal levels from which it originated. It also communicates with the background Intelligence which contains all knowledge.

Data barriers prevent direct communication of this to the brain. Mediumship, remote viewing, and dowsing, are situations where these data barriers are bypassed.

According to the Seth Communication, our core software is the size of a small brown nut. This would be about 10mm in diameter. When freed from the body illusion, I believe it is being found on digital pictures as the ‘Orb form’. The one and a half to two inches diameter of the orb is likely to be the energy field which supplies its power and maintains its structure as it moves through the environment projection. The actual core software is not recorded by the camera, only the energy field.

Reaction tests to find out why top gun pilots could anticipate the moves of their adversaries used computer selected images, ‘nice’ or ‘nasty’. These experiments found that some people could anticipate which type of picture would be displayed up to five seconds before the computer system had selected the picture at random. This reaction was measured by increased heart rate before the brain would react.

Monroe’s *Far Journeys* contains great truths which can now be understood when related to the vibration powered Pearson annihilating energy matrix. In Chapter 6: ‘Segue’, Monroe says:

‘A form of dynamic energy yet to be identified and measured by main stream human civilization [now known to be software] is present in all carbon-based organic life. It is this Essence in organised form that enters the physical body prior to birth and departs at death, presumably more educated and with a minimum of wear and tear. The difference between the human form and that of a cow or a worm is only the degree of complexity of such organisation. Human consciousness is a manifestation of this. It is a vibrational pattern, multi-layered and of many interacting and resonating frequencies. It responds to and acts upon similar patterns from external sources.’ [Slightly altered – The similar patterns are between the mind and other minds and, via the Earth brain, the Earth environments. They are all made from patterns of vibration in the Dark Energy Matrix.] Human and other consciousness are inherently nonphysical. As such, they are not time space dependent.’

During a ‘Scole Experiment’ seance (Norfolk, UK) three scientists were present: Montague Keen, Arthur Ellison, and David Fontana. They were invited by spirit communicators to pick up an apported glowing crystal from a Pyrex bowl. They each tried to pick up the crystal but their fingers when through it. When asked for a second time, they could pick it up. The third time they went to pick the crystal up, their fingers went through the crystal and they could not do it. The ‘solidity interface’ had been turned off again by the Spirit experimenters. ([*The Scole Report Proceedings of the Society For Psychological Research*](#), v. 58, pt. 220, p. 55).

The computation system is extremely powerful and runs at near infinite speed. Seth says that it can calculate, in a second, conditions which will occur in a thousand years’ time.

In 2011, I was writing Ron an email when I suddenly had a thought which expressed my idea, based on an extension to his theory, that **‘The origin of the mind and the Universe is based on highly evolved, multi-frequency, vibration-powered computing.’** At that that time our universe was the only environment believed to exist, a fallacy which main stream science is reluctant to abandon even today. I wrote a couple more lines and then felt I had to write the statement again. This time I wrote it in capitals.

‘THE ORIGIN OF THE MIND AND THE UNIVERSE IS BASED ON HIGHLY EVOLVED MULTI-FREQUENCY VIBRATION-POWERED COMPUTING.’

At the time this was written, my concept of mind was intelligent creative thinking systems which formed the background operating system. So ‘MIND CAME BEFORE MATTER’. Minds invented matter to convert thought into artificial reality.

From the instant I started to type this into my computer, until the instant I entered the last letter – and then it was gone – I was in the ‘Bliss State’. A feeling of total peace and tranquillity which is hard to describe if never experienced. I timed how long it took me to write the statement and it was 45 seconds.

I think that I had a ‘guide’ with me when I wrote the statement—and it was so crucial that he gave me the experience to emphasise the importance of the information. The guide must have been from a high level to have the power to block part of the mind-brain link. It is likely that it was an emotional feedback link which was switched off to enable my thinking to float free of any emotion.

I reported what had happened to me to the Pearson Research Team. Ron subsequently published it in his next book, where it is on record.

The book *Swamiji’s Treasures* – the life of Shivabalayogi (Handloom publishing) – disclosed that the bliss state occurs when the link between the Higher Self (‘core mind’) in the chest and the brain is disrupted. The Hindus believe that 22% of the Higher Self operates via the brain illusion. I consider this to be a reasonable estimate. The core software links to other minds and information far beyond the confines of the body illusion. This is the basis of remote viewing. Dowsing is a way for the mind to bypass its confinement to provide answers via the motor function of the brain. It is low level remote viewing.

The curious thing is that I continued to think and to type whilst this was happening. It is the most remarkable feeling and experience which I have ever had.

I have a friend, Mike – a Buddhist monk attached to the ashram of Dharma Sangha – who is directly connected to the Background Intelligence. It took Mike six months of meditation to get into the same bliss state.

Mike also reports that Dharma Sangha says that our core thinking software is located in the heart. This was his point of concentration during his tapas meditation period. Dharma Sangha was known as ‘Ram’ during this time and reported by the Discovery Channel as the ‘Buddha Boy of India’. The only teacher he would accept was God [the Background Intelligence system].

He sat in meditation for ten months without moving, with hundreds of people surrounding his meditation site inside a hollow tree. During this time, a fire was lit under him by paranormal means. He remained in the flames of that fire, sitting and standing for forty-five minutes.

To see this visit YouTube: [Dharmah Sangha Inside Fire](#).

He also went six years and ten months without food and water.

With an understanding of Ron Pearson’s ‘Big Breed Theory’, we can now understand why this is possible.

However, whilst the principle of vibration-powered computing holds good, in 2021, the designers of our Universe – channelled by the medium, Brigitte Rix – provided information which necessitated a **major revision to the theory.**

I was told by the high level communicators – via Brigitte Rix – that **the Background Intelligence and Creative Thinking Power had always existed and would always exist.** It was constantly searching for new ways to express itself. There was no limit to its size or age.

So, with a slight alteration to Ron Pearson's theory, we have a logical route to the existence of the Intelligence behind our Universe Illusion, and existence on other frequencies of life. It is the formation of the filaments which have always existed to infinity, far beyond the Earth display system which is set against the illusion of our physical universe. **It is the filament matrix into which the apparently physical Universe illusion is printed.**

We now need to delve deeper into the Creative Thinking Power which drives all creation. We need information, and that is provided by high level spirit world entities via the 2015 book, [*Worlds Beyond the Spirit World*](#), channelled by my co-researcher and medium, **Brigitte Rix**. The following is from page 74 – **'Definition of thought'** [abridged]:

Question: *So there was one already existing Thought Power at the 'Origin'?*

One underlying Energy Field and vibrations of unimaginable magnitude is the only answer to Reality. But there has not been one being as such, as you would call or think of as a 'being'. It has to be comprehended that the only **One Mighty Force is the Universal Power.** That **Power has Life within Itself** – that means: **as it intensifies Itself, it will shoot out thoughts.**

Question: *You talk of Energy Field and Thought – could you please define a Thought?*

A Thought is a 'piece' of Energy made by a thinking Mind... That Eternal Thought Power (also known as Mind Power) is a ginormous and mighty Force, beyond all understanding, which does constantly **feel the Inner Urge not only to exist but to extend its existence into different forms.** It is indeed a kind of **limitless boundless 'Mass of Energy' throbbing with that desire to extend itself.** What you know is the current physical Matter which you are all made of and surrounded with, but there are numerous other planes and dimensions, which do not have that kind of Matter and exist **differently.**

So what is 'Thought'?

The moment an idea, an impression comes strongly to the surface of that 'Sea of Mind Power', a 'thought' is born, promptly giving birth itself to some more thoughts. A thought is not created by the brain of course...but a brain can conduct and channel or block the flow of thoughts received from the Mind of individual beings. Therefore a thought is a 'piece' of Energy, emitted by the potent impressions and desires of an individual Mind, which is itself a powerful tool of every being in existence.

This Creative Intelligence exists – and has always existed – in the Dark Energy Matrix to infinity beyond our physical universe. The Seth Communication, via the medium Jane Roberts, describes the Background Intelligence and Creative Thinking Power as 'ALL THAT IS'. He also says it is a psychic gestalt. A gestalt being where the whole exceeds the sum of its parts. These individual intelligences would therefore grow from the offshoots of the underlying Creative Energy Field and themselves use it to produce their own creations.

The Earth software makes automatic changes to us and our environment, changes which we call 'time'. The system extrapolates many futures from which we choose our path through the life game. Such a concept is confirmed by people who had Earth lives and moved back to alternative states of existence outside the Earth game. They spoke as 'Independent Direct Voices' on the thousands of tapes recorded during the séances of the renowned medium, Leslie Flint's. Many of these can be

heard on the [Leslie Flint](#) website. From these tapes, I learnt that **‘All history is recorded and the future is already in embryo’**. They also contain the statement **‘ALL IS VIBRATION’**.

When we exit the Earth life game, we go back to the higher frequencies of Life from which we came. Since these ethereal environments do not have automatic change, and **time is a measure of the rate of change**, they do not have ‘time’. Change only occurs when there is a **SHIFT of INTENSITY of INTENTION**, by individual or group Creative Thinking Powers. This is picked up and actioned by the operating system.

It is this operating system which also sets up the communication links which are reported as telepathy or mediumship. It also enables remote viewing, apports, and duplication of objects from the history records.

The Scoble Experimental Group received two apported newspapers during seances in the 1990s. They arrived in pristine condition as if directly off the news-stand. These were an original copy of the *Daily Mail* dated 1 April 1944 and an original copy of the *Daily Express* dated 28 June 1945. These were tested by the Paper Industry Research Association (PIRA) and proved to be the correct mix for wartime newspaper. Normally, newspapers from those days would turn yellow after a couple of weeks, but these arrived in pristine condition apart from the folds.

Their front pages were relevant to the séance in which they arrived. Since all history is recorded, these newspapers were ‘copied’ from the history of the time stream **by the Spirit Scientists**.

More details can be found in the 1999 book [The Scoble Experiment](#) by Grant & Jane Solomon.

So the ‘Source-driven’ operating system is the basis of the many events which are reported as Paranormal, although some will be explained by conventional science. However, it is the software of our illusion which science examines in detail with instruments which are also part of that illusion. Therefore, **we must look outside the illusion to get the right answers**.

So Ron’s Big Breed Theory resulting in the Dark Energy Matrix provides a sub-quantum explanation for the ‘string theory’ and quantum entanglement speeds in excess of 10,000 times the speed of light. This is what Einstein called ‘spooky action at a distance’.

The Dark Energy Matrix channels waves of organised vibration at near infinite speed. This provides instantaneous communication over vast distances.

It is the misconceptions of science – which is measuring an illusion from within an illusion, with equipment which is also an illusion – which prevents them from reaching the sub-quantum reality.

Our lives are the product of advanced artificial reality software to which our core software is linked, both on the Earth and in the ethereal frequencies.

Those lives are described by Seth as ‘Fiction’ and ‘Camouflage’. The designers of the Earth system – channelled by the medium Brigitte Rix – call it ‘A Play’ and ‘Theatre’ in a new form of what appears to be solid reality for Creative Thinking Powers to experience.

Dark Energy contains the software of the eternal ‘SOURCE’, which is everywhere without limit. Vibration from the surging of Ron Pearson’s ‘Opposed Energy Dynamics’ is its power supply. It had no beginning. And it will have no end.

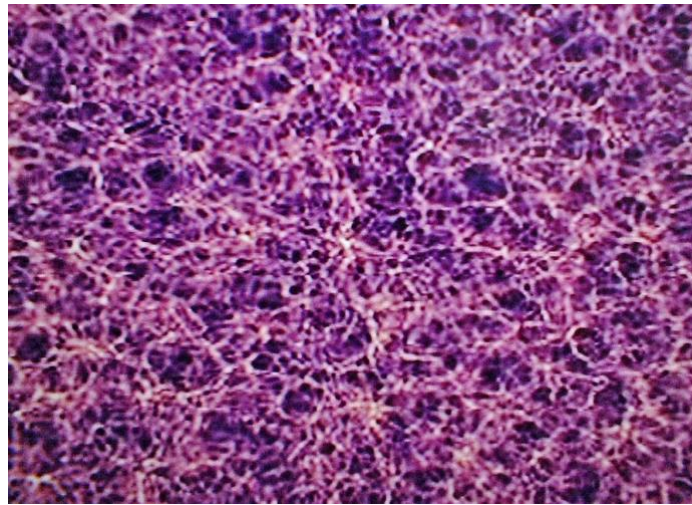
Conclusion:

We are the Immortal Children of 'ALL THAT IS', which is constantly questing for new ways to express Itself.

Supplemental Information

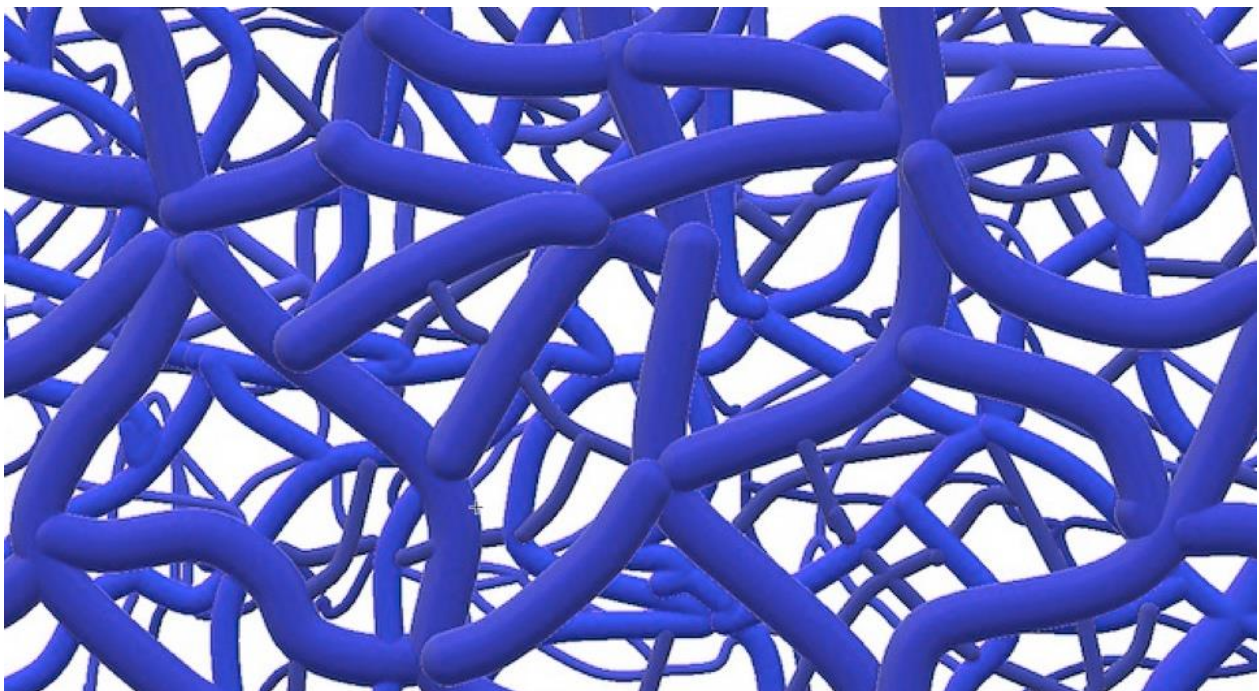
A picture of the structure of Dark Energy which I took from a screen shot of a television program about chaos theory. We do not have access to the computers needed to simulate these structures.

This chaos picture cannot be used commercially without consideration of copyright. However, I think readers of this article need to know about it to fully understand Dark Energy.



The Structure of Dark Energy

My own diagram of the structure of Dark Energy:



The Structure of Dark Energy
(Alan Middleton)

Ronald D Pearson is the man whom I believe found the structure and properties of Dark Energy:



Ron D Pearson (1925 – 2016)

Rory Duff is the leading authority on ENERGY LINES, which perhaps form the power supply grid for the Earth Illusion. Rory has made a video of Ron Pearson's Opposed Energy Dynamics:

[Outline of Ron Pearson's Big Breed theory](#) (YouTube)

Ron Pearson is the only scientist to have come up with a full theory of quantum gravity having first come up with a flaw free theory of the creation of the Universe. The big bang theory is riddled with flaws and clearly has to be ditched. This video is a short animation of the collisions between the primaries on the sub quantum level and it shows how a natural expansion can occur in a much better way.

This is a perfect match for Seth's maze of wires within which is the buzzing of a million bees. Seth was trying to describe a buzzing vibration within the 'wires', which are the neural network of annihilating filaments made from Ron Pearson's opposed energy dynamics.

It is the surging of his Opposed Energy Dynamics which provides continuous power everywhere to maintain the LIMITLESS CREATIVE THINKING POWER which exists on many frequencies, to infinity. THIS IS THE BASIS FOR THE WHOLE OF CREATION.

Research continues. All articles are derived from best available information at the time of writing.